



Eaton Bray Methodist Church

An adaptable venue available in the South Beds Methodist Circuit/Beds, Essex and Herts District of the Methodist Church for use by churches and church groups.

Facilities

We have a worship area with a calm atmosphere and comfortable seats that holds 60 in traditional format or 30 in cafe format, with flexibility to move the pulpit and communion rail. There is also a tuned and regularly used pipe organ, a baby grand piano and a sound system including hearing loop.



In addition we have a welcoming, spacious schoolroom adjacent to the worship area seating 40+ in café format with a serving counter. The well-equipped kitchen enables users to host alcohol-free catering events such as coffee mornings, afternoon teas and lunch receptions.

Both rooms are on the ground floor with 2 toilets (one accessible). There is level access to the worship area and separate external access to the schoolroom with a step between the two rooms.



Eaton Bray Methodist Church
Totterhoe Road
Eaton Bray LU6 2BD

Contact Details

For exploration of further ideas please contact Rev Jenny Spouge at jenny.spouge@methodist.org.uk

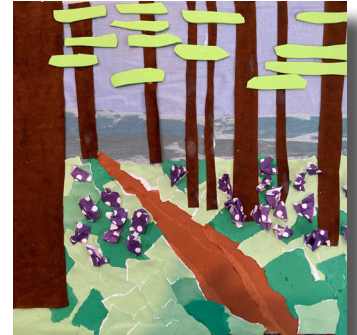
Eco-Church

In 2023 we achieved our Silver Eco-Award, and Eco - days can now be offered to others with a choice of workshops. These could, of course, contribute to other churches' Eco awards!



Opportunities

The premises could be available for church 'away days' and training days. We can draw on skills available in the circuit to facilitate creative retreats either theme based or for more general spiritual reflection and wellbeing. These don't require you to be good at art, but rather use a variety of creative media to give space for exploration.



About The Church

The church was built in 1795 on land purchased for £7.10s after men and women had crossed the fields to hear John Wesley preach under the Giant Elm at Tilsworth. It was known as the Mother church, the oldest in the Bedfordshire circuit. It is a grade 2 listed building.

The building was improved in 1864 and thoroughly refurbished and redecorated in 1991.



Eaton Bray Methodist Church
Totternhoe Road
Eaton Bray LU6 2BD

Contact Details

For exploration of further ideas please contact Rev Jenny Spouge at jenny.spouge@methodist.org.uk